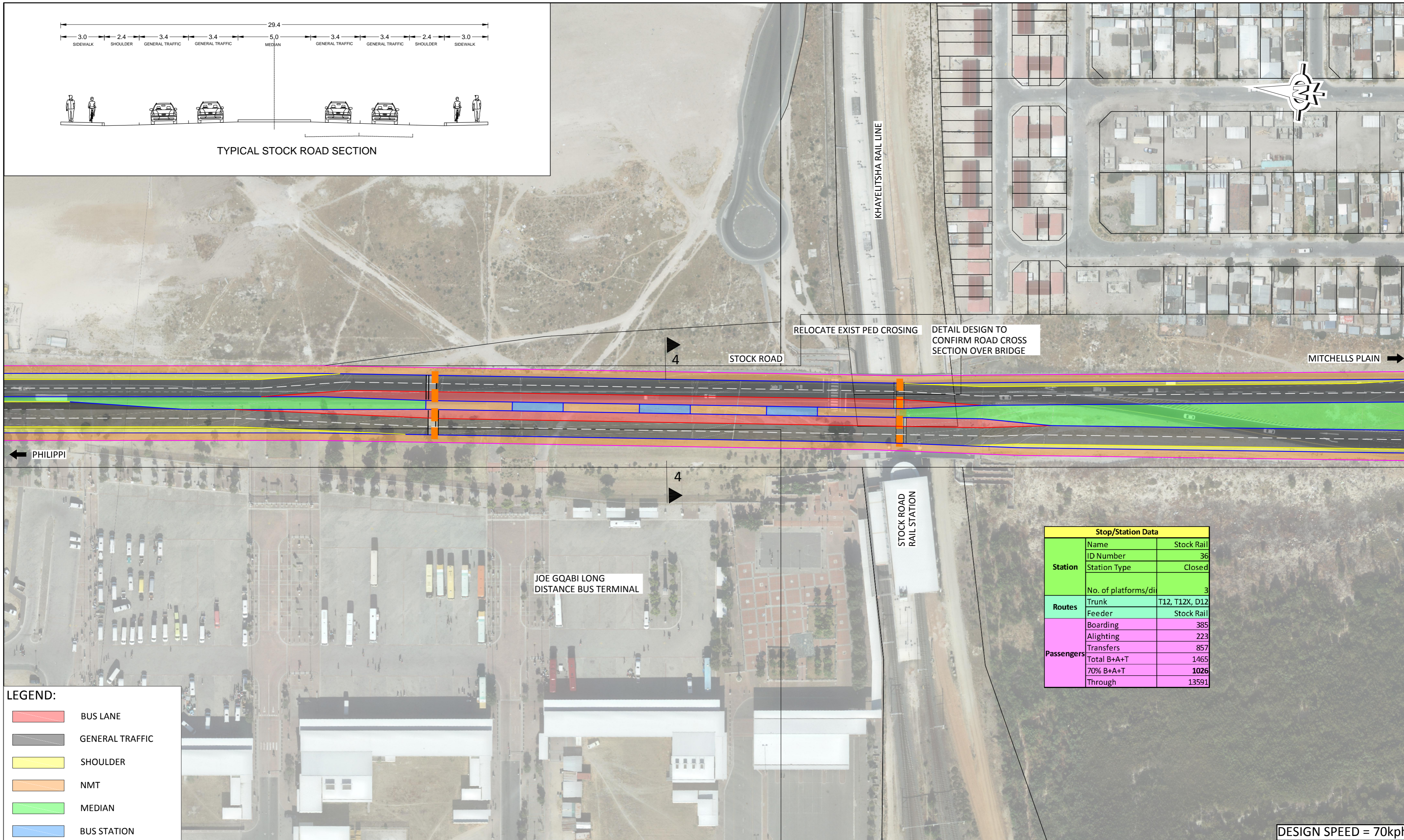


TYPICAL STOCK ROAD SECTION



RELOCATE EXIST PED CROSSING

DETAIL DESIGN TO CONFIRM ROAD CROSS SECTION OVER BRIDGE

STOCK ROAD

MITCHELLS PLAIN

PHILIPPI

STOCK ROAD RAIL STATION

JOE GQABI LONG DISTANCE BUS TERMINAL

Stop/Station Data		
Station	Name	Stock Rail
	ID Number	36
	Station Type	Closed
Routes	No. of platforms/di	3
	Trunk	T12, T12X, D12
Passengers	Feeder	Stock Rail
	Boarding	385
	Alighting	223
	Transfers	857
	Total B+A+T	1465
	70% B+A+T	1026
	Through	13591

LEGEND:

- BUS LANE
- GENERAL TRAFFIC
- SHOULDER
- NMT
- MEDIAN
- BUS STATION

DESIGN SPEED = 70kph

NO	DATE	DESCRIPTION	CHECK	APP.
02	30-04-2015	Bus Station relocated north of railway line as per Client. Station data added.	SP	
01	20-02-2015	Bus Station added south of railway line.	SP	

SURVEYED	
DESIGNED	SP
DRAWN	YW
CHECKED	SP
APPROVED	CHIEF ENGINEER

MELISSA WHITEHEAD COMMISSIONER : TRANSPORT FOR CAPE TOWN	
DAVE. HUGO DIRECTOR: INFRASTRUCTURE	MADDIE MAZAZA DIRECTOR: PLANNING
RON HAIDEN Pr Eng. MANAGER: PUBLIC TRANSPORT INFRASTRUCTURE	GERSHWIN FORTUNE MANAGER: SYSTEM PLANNING & MODELLING

CITY OF CAPE TOWN

IRT: CONSTRUCTION OF PUBLIC TRANSPORT INFRASTRUCTURE FOR PHASE 2a LANSDOWNE - WETTON CORRIDOR STOCK ROAD - STOCK ROAD STATION	
SCALE 1:1000 SHEET A2	DISCIPLINE: CE = CIVIL ENG. ARC = ARCHITECT EE = ELEC. ENG INFRA. TYPE: ST = BUS STOP S = STATION D = DEPOT B = BUSWAY PROJ. Name: IRT - 2a - B - CE - SR - 4 - S - 02 STATUS CODES: S = SPATIAL CONCEPT T = TENDER C = CONSTRUCTION A = AS-BUILT

